

# DrayTek

*Vigorous Networking Solution for SMEs*



*DATABOOK 2023*



DrayTek is a manufacturer of broadband CPE (Customer Premises Equipment), including firewalls, VPN devices, load-balancing routers, wireless access points, and switches. Our goal is to provide reliable and high-integrated networking solutions at an affordable price, become the reliable networking partner of small and medium-sized businesses.



## Contents

### Router

---

Broadband	3-6
xDSL	6-10

---

Wireless AP	11-14
-------------	-------

Switch	15-18
--------	-------

Software / Tools	19-20
------------------	-------

Accessories	21-22
-------------	-------

Feature Matrix	23-32
----------------	-------

### Vigor2135 Series

Gigabit Broadband Router



Vigor2135ax

- Gigabit Ethernet WAN port
- 2 USB ports for 3G/4G backup or network storage
- 2 Simultaneous VPN Tunnels including 2 SSL VPN
- Bandwidth Management with intelligent VoIP QoS
- Central Management for VigorAP
- Support DrayDDNS

	WLAN	VoIP	Fiber
Vigor2135			
Vigor2135ac/ax	•		
Vigor2135Vac	•	•	
Vigor2135FVac	•	•	•

### Vigor2927 Series

Dual-WAN Security Router



- Dual-WAN for load-balancing or redundancy
- 2 x USB 2.0 or 1 x USB 2.0 (L model)
- SIM-base, 3G/4G LTE Router, CAT 6 up to 300Mbps connection speed (L model)
- 2 x FXS ports (V model)
- 50 simultaneous VPN tunnels, up to 25 SSL VPN
- SPI Firewall and Content Filtering
- Central Management for VigorAP & VigorSwitch
- Support DrayDDNS

### Vigor2915 Series

Dual-WAN Security Router



- Dual-WAN for load-balancing or redundancy
- 1 USB port for 3G/4G WAN, printer, or network storage
- 16 concurrent VPN tunnels including up to 8 SSL VPN
- Bandwidth management & QoS for the best VoIP quality
- SPI Firewall with Content Filtering by Apps, URL keyword, and web category
- IPv6 Support
- Support DrayDDNS

	WLAN
Vigor2915	
Vigor2915ac	•

### Vigor2927FLVax



	WLAN	LTE	VoIP	Fiber
Vigor2927				
Vigor2927L		•		
Vigor2927ac/ax	•			
Vigor2927Lac/Lax	•	•		
Vigor2927Vac/Vax	•		•	
Vigor2927FLVac/FLVax	•	•	•	•

F model (Project base)

## Vigor2962

High Performance Dual-WAN Router



- 4 LAN/WAN configurable ports (1 x 2.5GbE & 1 x SFP/GbE combo & 2 x GbE) (up to 2 simultaneous WANs)
- 2 Gigabit Ethernet LAN ports
- 1x USB 2.0 & 1x USB 3.0
- 200 simultaneous VPN tunnels including up to 50 SSL VPN
- Support High Availability (hardware redundancy)
- Central Management for VigorAP & VigorSwitch
- Support DrayDDNS

## Vigor3912 Series

High Performance 10G Router



- 8 x WAN/LAN switchable ports & 4 x fixed LAN ports
- 2 x 10G SFP+ & 2 x 2.5G Ethernet for WAN or LAN
- Quad-Core Processor provides 18 Gbps NAT throughput
- 1000k NAT sessions Recommended for a network of 500+ hosts
- 500 simultaneous VPN tunnels throughput over 6 Gbps
- Supported and managed by VigorACS
- 256GB M.2 SDD (Vigor3912S)
- Support DrayDDNS

## Vigor3910

High Performance 10G Router



- 8 x WAN/LAN switchable ports & 4 x fixed LAN ports
- 2 x 10G SFP+ & 2 x 2.5G Ethernet for WAN or LAN
- Quad-Core Processor provides 9 Gbps NAT throughput
- 1000k NAT sessions Recommended for a network of 500+ hosts
- 500 simultaneous VPN tunnels throughput over 3 Gbps
- Supported and managed by VigorACS
- Support DrayDDNS

## Vigor166

G.Fast Modem

xDSL



- Support G.Fast/VDSL2 35b Super Vectoring/ADSL2+
- Multi-PVC for triple-play applications

## Vigor167

Super Vectoring Modem



- Support VDSL2 35b Super Vectoring/ADSL2+
- Multi-PVC for triple-play applications

## Vigor2620 LTE Series

LTE Router



- Dual SIM for 3G/4G/LTE Cellular Connectivity with speed up to 150 Mbps
- VDSL2/ADSL2+ Modem Router
- Robust Firewall & Security for Internet activities
- 2 VPN connections for remote access and LAN-to-LAN
- Bandwidth Management with intelligent VoIP QoS
- Support DrayDDNS

	DSL	WLAN
Vigor2620L	•	
Vigor2620Ln	•	•

## Vigor2765 Series

Super Vectoring Security Router



- Support VDSL2 35b Super Vectoring/ADSL2+
- Robust Firewall & Security for Internet activities
- 2 VPN connections for remote access and LAN-to-LAN
- Bandwidth Management with intelligent VoIP QoS
- Support DrayDDNS

	WLAN	VoIP
Vigor2765		
Vigor2765 ac/ax	•	
Vigor2765 Vac	•	•



Vigor2765ax

## Vigor2763 Series

ADSL2/2+ & VDSL2 Router



- VDSL2/ADSL2+ Modem/Router
- Robust Firewall & Security for Internet activities
- 2 VPN connections for remote access and LAN-to-LAN
- Bandwidth Management with intelligent VoIP QoS
- Support DrayDDNS

	WLAN
Vigor2763	
Vigor2763 ac	•

## Vigor2766 Series

G.Fast Security Router



- Support G.Fast/VDSL2 35b Super Vectoring/ADSL2+
- Robust Firewall & Security for Internet activities
- 2 VPN connections for remote access and LAN-to-LAN
- Bandwidth Management with intelligent VoIP QoS
- Support DrayDDNS

	WLAN	VoIP
Vigor2766		
Vigor2766 ac/ax	•	
Vigor2766 Vac	•	•



Vigor2766ax

## Vigor2865 Series

Super Vectoring Security Firewall



- Support VDSL2 35b Super Vectoring/ADSL2+
- 2 x USB 2.0 or 1 x USB 2.0 (L model)
- SIM-base, 3G/4G LTE Router, CAT 6 up to 300Mbps connection speed (L model)
- 2 x FXS ports (V model)
- 32 Simultaneous VPN Tunnels including 16 SSL VPN
- SPI Firewall with Content Filtering
- Central Management for VigorAP & VigorSwitch
- Support DrayDNS

## Vigor2866 Series

G.Fast Security Firewall



- Support G.Fast /VDSL2 35b Super Vectoring/ADSL2+
- 2 x USB 2.0 or 1 x USB 2.0 (L model)
- SIM-base, 3G/4G LTE Router, CAT 6 up to 300Mbps connection speed (L model)
- 2 x FXS ports (V model)
- 32 Simultaneous VPN Tunnels including 16 SSL VPN
- SPI Firewall with Content Filtering
- Central Management for VigorAP & VigorSwitch
- Support DrayDNS

### Vigor2865FLVax



	WLAN	LTE	VoIP	Fiber
Vigor2865				
Vigor2865L		•		
Vigor2865ac/ax	•			
Vigor2865Lac/Lax	•	•		
Vigor2865Vac/Vax	•		•	
Vigor2865FLVac/FLVax	•	•	•	•

F model (Project base)

### Vigor2866FLVax



	WLAN	LTE	VoIP	Fiber
Vigor2866				
Vigor2866L		•		
Vigor2866ac/ax	•			
Vigor2866Lac/Lax	•	•		
Vigor2866Vac/Vax	•		•	
Vigor2866FLVac/FLVax	•	•	•	•

F model (Project base)

## VigorAP 903

11ac Dual-Band Wireless Mesh AP



- Concurrent dual band
- Support 2x2 11ac WAVE2
- Data rate up to 867Mbps in 5GHz and up to 400Mbps in 2.4GHz
- 5 GbE port (including 1 PoE) + 1 USB Port
- Plug-n-Play Meshing
- Airtime Fairness
- Band Steering
- AP-Assisted Roaming
- Built-in RADIUS server for 802.1x authentication
- Compliant with Central AP Management of Vigor Router and VigorACS

## VigorAP 912C

802.11ac Ceiling-mount AP



- Concurrent Dual-band 802.11ac with 2x2 MIMO
- Delivers data rate of up to 867 Mbps in the 5GHz band and 300 Mbps in the 2.4GHz band
- Plug-n-Play Meshing
- 1 x PoE-capable Gigabit Ethernet port
- AirTime Fairness and Band Steering
- AP-Assisted Roaming
- Built-in RADIUS server for 802.1x authentication
- Compliant with Vigor central AP management and VigorACS

## VigorAP 906

802.11ax Dual-Band AP



- Concurrent Dual-band 802.11ax with 2x2 MIMO
- AX3000 dual-band wireless interface
- 5 GbE port (including 1 PoE)
- Plug-n-Play Meshing
- AirTime Fairness and Band Steering
- AP-Assisted Roaming
- Built-in RADIUS server for 802.1x authentication
- Compliant with Vigor central AP management and VigorACS

## VigorAP 960C

802.11ax Ceiling-mount AP



- Concurrent Dual-band 802.11ax with 2x2 MIMO
- AX1800 dual-band wireless interface
- Plug-n-Play Meshing
- 1 x PoE-capable Gigabit Ethernet port
- AirTime Fairness and Band Steering
- AP-Assisted Roaming
- Built-in RADIUS server for 802.1x authentication
- Compliant with Vigor central AP management and VigorACS

## VigorAP 1062C

802.11ax Ceiling-mount AP



- Support 4x4:4 for both 2.4GHz and 5GHz, providing up to 6.0Gbps
- 1 x PoE-capable 2.5GbE port
- Utilize Transmission Opportunity with OFDMA
- Airtime Fairness
- Band Steering
- AP-Assisted Roaming
- Built-in RADIUS server for 802.1x authentication
- Compliant with Central AP Management of Vigor Router and VigorACS

## Assisted Wi-Fi Roaming

### Making Transmission Effective

Disassociate the Wi-Fi clients who are out of the effective transmission range defined by custom Basic Rate or/and RSSI threshold, and force them to pick up another access point with a stronger signal.

### Resource Saving

Proactively kick out the clients with a low basic rate or low RSSI can prevent the access points trying to do ineffective transmission but saving the airtime, which will results in better Wi-Fi experience for all.

### No Controller Required

Assisted Roaming is a feature built in all Vigor Access Points and selected Wi-Fi routers. They operate without a wireless controller, providing an ideal solution for simple network deployment.



## VigorAP 918R Series

11ac Dual-Band Outdoor AP



- IP 67-rated enclosure for outdoor usage, water-proof and dust-resistance
- 2.4/5GHz Dual band WiFi with 2x2 MIMO
- Secure VLAN/SSID grouping, up to 128 WLAN clients manageable per Radio
- IEEE 802.3az/Energy Efficient Ethernet PoE port
- Compatible with AP Management for centralized management
- High RF power for long-distance and expansive coverage
- Built-in 5GHz Direction Antenna selectable (918RPD)

	PoE Out	Directional Antenna
VigorAP 918R		
VigorAP 918RPD	●	●

## Wireless Solution

### Wireless Solution

Good wireless experience has many different aspects, including easy setup, client seamless roaming, and more.

From home/SOHO with just a handful of APs, midsize office with tens of APs, all the way up to corporates with multiple branches, DrayTek has different AP management solution aiming to make it easy with each scenario.





## VigorSwitch G1080

Smart Lite Gigabit Switch

- Simple and Easy to use network switch
- 8 x Gigabit capable ports
- Support HTTP Web Management
- QoS for application traffic prioritization
- Support 8 VLANs & 1 Trunking Group
- Power saving by 802.3az Energy Efficient Ethernet
- Support Loop Detection & Prevention



## VigorSwitch G2100/P2100

L2+ Managed Switch

- 8 x Gigabit capable ports & 2 x GbE SFP ports
- 8 x Gigabit PoE+ capable ports with PoE power budget up to 140 watts (P2100)
- VLAN configuration based on 802.1q tag, MAC address, and protocol
- Auto Voice VLAN and Auto Surveillance VLAN to optimize call and video quality
- Secure Local Network by 802.1x Port Security, ACL, IP Source Guard and DHCP Snooping
- Support IPv6 with MLD Snooping, IPv6 ACL, and IPv6 DNS Resolver
- Authentication by local database, multiple RADIUS, and TACACS+ servers
- Support SNMP v1/v2c/v3, RMON, and Syslog for network monitoring
- Compliant with Switch Management of Vigor Router and VigorACS
- Static Route
- DHCP Server



Web Smart

## VigorSwitch G1282/P1282

Web Smart Gigabit Switch

- 24 x Gigabit capable ports & 4 combo Gigabit SFP/RJ-45 ports
- 24 x Gigabit PoE+ capable ports with PoE power budget up to 400 watts (P1282)
- Auto Voice VLAN for easy VoIP deployment and best call quality
- QoS with 8 priority queues and rate limiting
- Dual-stack IPv4/IPv6 support
- Compliant with Switch Management of Vigor Router



## VigorSwitch FX2120

L2+ Managed Switch

- 12 x 10G SFP+ ports
- VLAN configuration based on 802.1q tag, MAC address, and protocol
- Auto Voice VLAN and Auto Surveillance VLAN to optimize call and video quality
- Secure Local Network by 802.1x Port Security, ACL, IP Source Guard and DHCP Snooping
- Support IPv6 with MLD Snooping, IPv6 ACL, and IPv6 DNS Resolver
- Authentication by local database, multiple RADIUS, and TACACS+ servers
- Support SNMP v1/v2c/v3, RMON, and Syslog for network monitoring
- Compliant with Switch Management of Vigor Router and VigorACS
- Static Route
- DHCP Server
- OpenFlow

The OpenFlow functionality is project-based and must be activated by DrayTek HQ. Please contact your Sales for further inquiries.



## VigorSwitch Q2121x/PQ2121x/PQ2121xb

L2+ Managed 2.5GbE Switch

- 8 x 2.5Gigabit capable ports & 4 x 10G SFP+ ports
- 8 x PoE+ 2.5Gigabit capable ports with PoE power budget up to 140 watts (PQ2121x)
- 4 x PoE++ & 4 x PoE+ 2.5Gigabit capable ports with PoE power budget up to 240 watts (PQ2121xb)
- VLAN configuration based on 802.1q tag, MAC address, and protocol
- Auto Voice VLAN and Auto Surveillance VLAN to optimize call and video quality
- Secure Local Network by 802.1x Port Security, ACL, IP Source Guard and DHCP Snooping
- Support IPv6 with MLD Snooping, IPv6 ACL, and IPv6 DNS Resolver
- Authentication by local database, multiple RADIUS, and TACACS+ servers
- Support SNMP v1/v2c/v3, RMON, and Syslog for network monitoring
- Compliant with Switch Management of Vigor Router and VigorACS
- Static Route
- DHCP Server



## VigorSwitch G2282x/P2282x

L2+ Managed Switch

- 24 x Gigabit capable ports & 4 x 10G SFP+ ports
- 24 x Gigabit PoE+ capable ports with PoE power budget up to 400 watts (P2282x)
- VLAN configuration based on 802.1q tag, MAC address, and protocol
- Auto Voice VLAN and Auto Surveillance VLAN to optimize call and video quality
- Secure Local Network by 802.1x Port Security, ACL, IP Source Guard and DHCP Snooping
- Support IPv6 with MLD Snooping, IPv6 ACL, and IPv6 DNS Resolver
- Authentication by local database, multiple RADIUS, and TACACS+ servers
- Support SNMP v1/v2c/v3, RMON, and Syslog for network monitoring
- Compliant with Switch Management of Vigor Router and VigorACS
- AC/DC Dual Input
- Static Route
- DHCP Server
- Stacking



## VigorSwitch Q2200x/PQ2200xb

L2+ Managed 2.5GbE Switch

- 16 x 2.5Gigabit capable ports & 4 x 10G SFP+ ports
- 4 x PoE++ & 12 x PoE+ 2.5Gigabit capable ports with PoE power budget up to 400 watts (PQ2200xb)
- VLAN configuration based on 802.1q tag, MAC address, and protocol
- Auto Voice VLAN and Auto Surveillance VLAN to optimize call and video quality
- Secure Local Network by 802.1x Port Security, ACL, IP Source Guard and DHCP Snooping
- Support IPv6 with MLD Snooping, IPv6 ACL, and IPv6 DNS Resolver
- Authentication by local database, multiple RADIUS, and TACACS+ servers
- Support SNMP v1/v2c/v3, RMON, and Syslog for network monitoring
- Compliant with Switch Management of Vigor Router and VigorACS
- Static Route
- DHCP Server



## VigorSwitch G2540xs/P2540xs

L2+ Managed Switch

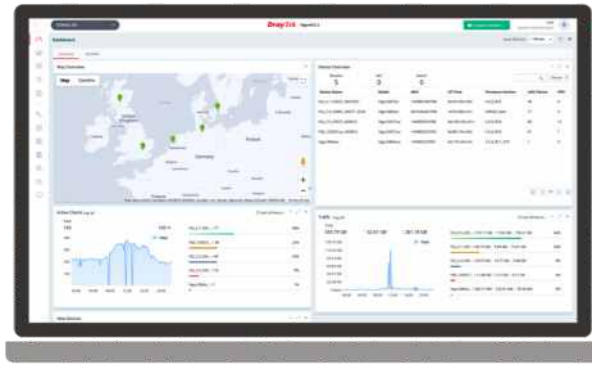
- 48 x Gigabit capable ports & 6 x 10G SFP+ ports
- 48 x Gigabit PoE+ capable ports with PoE power budget up to 400 watts (P2540xs)
- VLAN configuration based on 802.1q tag, MAC address, and protocol
- Auto Voice VLAN and Auto Surveillance VLAN to optimize call and video quality
- Secure Local Network by 802.1x Port Security, ACL, IP Source Guard and DHCP Snooping
- Authentication by local database, multiple RADIUS, and TACACS+ servers
- Support SNMP v1/v2c/v3, RMON, and Syslog for network monitoring
- Compliant with Switch Management of Vigor Router and VigorACS
- Support IPv6 with MLD Snooping, IPv6 ACL, and IPv6 DNS Resolver
- Static Route
- DHCP Server
- OpenFlow



The OpenFlow functionality is project-based and must be activated by DrayTek HQ. Please contact your Sales for further inquiries.

## VigorACS 3

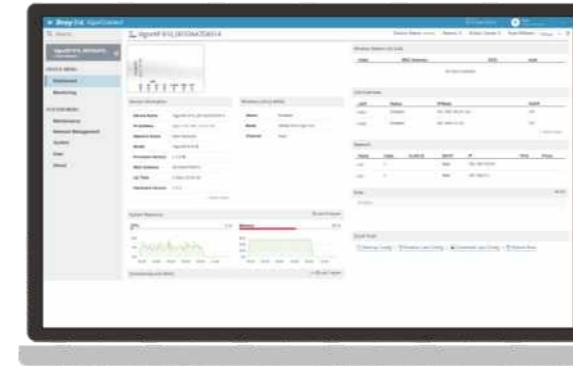
NMS for Vigor Devices and SD-WAN Orchestrator



- Zero Touch Deployment and Provisioning
- Auto-VPN for Hub-and-Spoke or Mesh Topology
- Interface Quality and SLA
- VoIP Optimization and Monitoring
- Application Visibility
- Application-Based SD-WAN Policy
- Customized Hotspot Page with Multilingual
- Hotspot Clients Analytics
- ACS Server Load Balancing / Failover

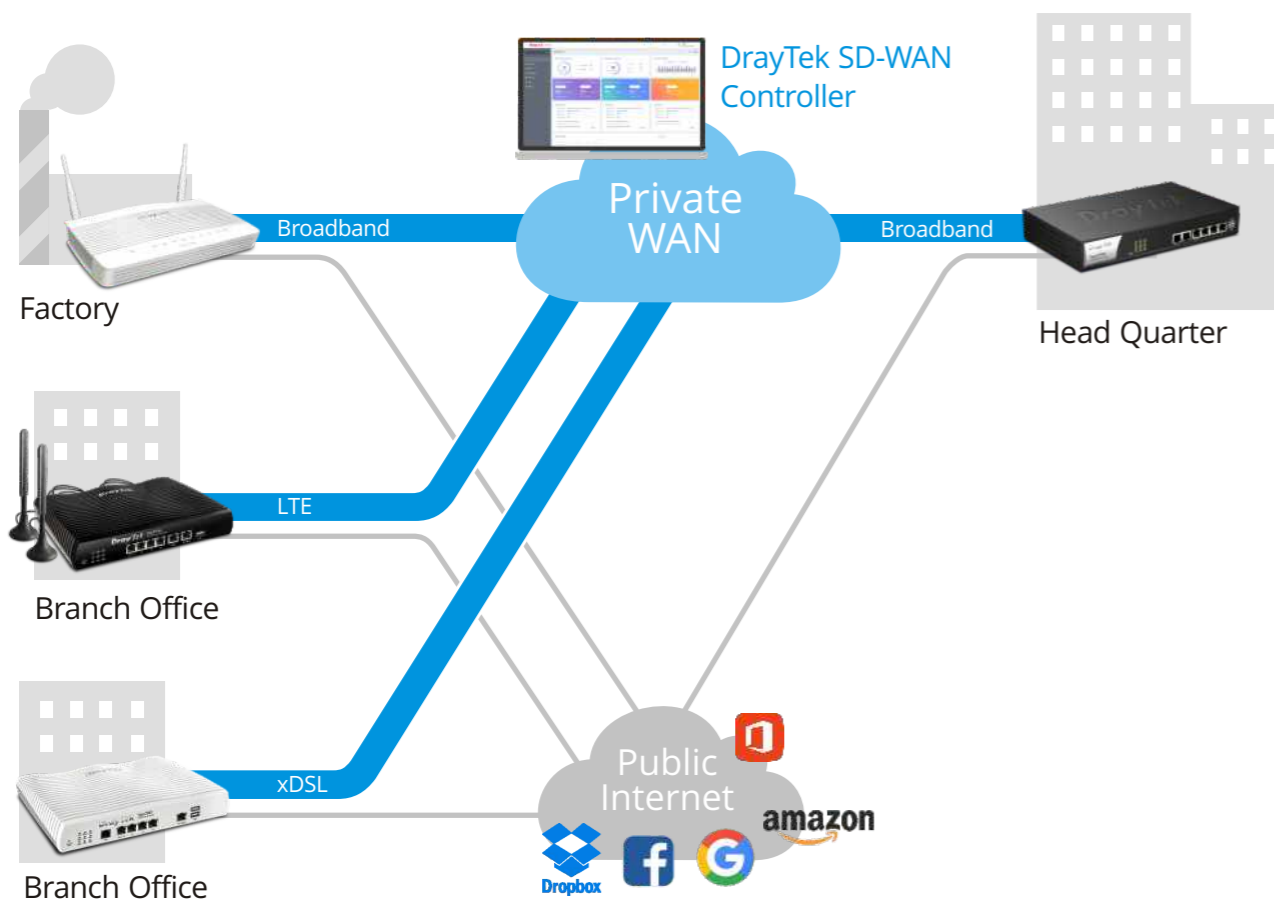
## VigorConnect

Local Network Management Software for DrayTek Devices



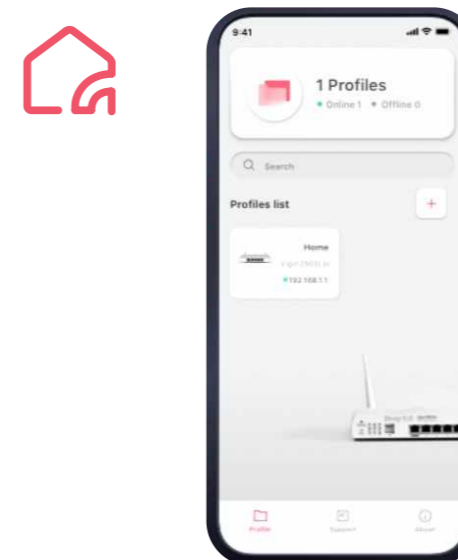
- Automatically discover all VigorAPs/VigorSwitches on your LAN and manage up to 100 devices
- Provision AP profile to APs in a network to set up several VigorAPs; setup the VLAN or PoE for selected Switches
- Get notified when an AP/Switch lost connection with the VigorConnect Server
- Network insights about AP, client, and CPU usage, etc. over a specified period
- Schedule an off-hour firmware upgrade or configure backup/restore

## SD-WAN Solution



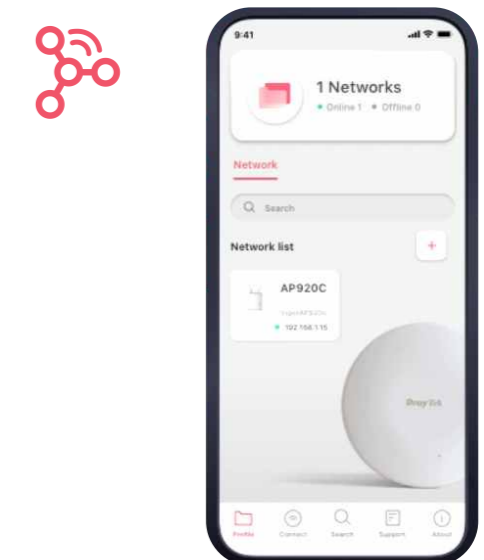
## DrayTek Router App

- Work with Vigor Router Series
- Setup major Router functions
- Parental control by content/time



## DrayTek Wireless App

- Work with VigorAP Series
- Setup Mesh/Wi-Fi
- Parental control by time



## VigorPoE 600

802.3af/at PoE Injector

VigorPoE 600 is a single-port passive PoE injector that delivers both power and data to connected PoE devices through a single cable. It can work with all DrayTek PoE compliant PDs, such as IP Cameras, Access Points, and others. The total power output can reach up to 60.5 watts, especially suitable for advanced PD like VigorAP920RPD or Vigor918RPD which consumes more power.

VigorPoE 600 provides an ideal solution with high flexibility to expand your network anywhere, never limited to the power line or outlet, and lower the installation cost.



## USB Thermometer

Temperature Sensor for DrayTek routers

- Direct router/AP connection
- Outer sensor included (1M)
- Data is displayed in °F or °C
- Informative Web Interface
- Alarm Max/Min Thresholds
- Continuous Reporting to syslog
- Email & SMS Reporting on threshold breach
- RoHS Compliant



## DAM-FX10-20K Series

10G SFP+ module

DAM-FX10-20K Series is an SFP+ Optical single transceiver. It is a small form-factor pluggable transceiver and is designed for use in 10 Gigabit Ethernet connection for a distance of up to 20km over a single SFP+ Module.

DAM-FX10-20K Series provides a high-performance and cost-effective solution, which is ideal for long-distance fiber connectivity. It is available in 2 types, **DAM-FX10-20K-A** (Type A) and **DAM-FX10-20K-B** (Type B).



## DrayTek Rack-mount Plate

The rack mount brackets is used for mounting the router onto a 19" standard rack.



## DAC-CX10

10G SFP+ Direct Attach Passive Copper Cable

DAC-CX10 is designed for providing high-speed data link via copper wire and support both Gigabit and 10 Gigabit Ethernet data rate, compatible to SFP+ MSA to meet Fiber Channel industry standard requirements to ensure performance and reliability.

It is available in 2 models, **DAC-CX10-1m** (Length:1m) and **DAC-CX10-3m** (Length:3m).



## Antenna Series

	ANT-1205	ANT-2520
Description	2.4GHz/5GHz Indoor Omni-Directional Antenna	2.4GHz/5GHz Indoor Directional Patch Antenna
Environment	Indoor	Indoor
Frequency Range	2400~2500 MHz 5150~5850 MHz	2400~2500 MHz 5150~5875 MHz
Peak Gain	@ 2.4GHz: 5 dBi @ 5GHz: 4.5 dBi	7.5 dBi 10 dBi
VSWR	< 2.0 @ 2.4GHz @ 5GHz	≤ 2.0
Polarization	Linear	Vertical, Linear
HPBW/Horizontal	@ 2.4GHz: 70° @ 5GHz: 60°	70° 60°
HPBW/Vertical	@ 2.4GHz: 60° @ 5GHz: 30°	60° 30°
Power Handling	1W	2W
Impedance	50 Ω	50 Ω
Connector	RP SMA Plug	RP SMA Plug



## Broadband Router

		Vigor2135 series					Vigor2915 series		Vigor2927 series					Vigor2962	Vigor3910	Vigor3912 series
		2135	2135ac	2135ax	2135Vac	2135FVac	2915	2915ac	2927	2927ac	2927ax	2927Vac	2927Lac	2962	3910	3912/S
WAN	Fixed WAN	1 x GbE				1 x SFP	1 x GbE		1 x GbE			1 x GbE + 1 x LTE				
	Switchable WAN/LAN						1 x GbE		1 x GbE			1 x 2.5GbE + 2 x GbE + 1 x GbE/SFP Combo		2 x 2.5GbE + 4 x GbE + 2 x SFP+	2 x 2.5GbE + 4 x GbE + 2 x SFP+	
LAN	Fixed LAN	4 x GbE					3 x GbE		5 x GbE					2 x GbE	4 x GbE	4 x GbE
	LAN Subnet	4					4		8					20	100	100
	DMZ Port								1							
USB Port		2					1		2			1	2	2	2	
WLAN	Standard		11a/b/g/n/ ac wave 2	11a/b/g/n/ ac wave 2/ax	11a/b/g/n/ac Wave 2			11a/b/g/n/ ac wave 2		11a/b/g/n/ ac wave 2	11a/b/g/n/ ac wave 2/ax	11a/b/g/n/ ac wave 2				
	2.4GHz			•				•			•					
	5GHz			•				•			•					
	Mesh			•							•					
VPN	Max. VPN	2					16		50					200	500	500
	Max. SSL VPN	2					8		25					50	200	200
	VPN Matcher	•					•		•					•	•	•
Routing	Static Route	•					•		•					•	•	•
	Policy Route	•					•		•					•	•	•
	RIP	•					•		•					•	•	•
	BGP	•					•		•					•	•	•
	OSPF	•					•		•					•	•	•
Content Filter	APP, Web Category, DNS Keyword	•					•		•					•	•	•
	URL Keyword	•					•		•					•	•	•
NAT Sessions		50K					30K		60K					300K	1000K	1000K
Bandwidth Management		•					•		•					•	•	•
DrayDDNS		•					•		•					•	•	•
VoIP					•						•					
VPN Management									8							
AP Management		2							20					50	50	50
Switch Management									10					30	30	30

## xDSL Router

		Vigor160 series		Vigor2620 LTE series		Vigor2763 series		Vigor2765 series			
		166	167	2620L	2620Ln	2763	2763ac	2765	2765ac	2765ax	2765Vac
WAN	Fixed WAN Port	1 x A/VDSL /35b/G.Fast	1 x A/VDSL /35b	1 x A/VDSL + 2 x LTE		1 x A/VDSL		1 x A/VDSL/35b			
	WAN/LAN Switchable Port			1 x GbE		1 x GbE		1 x GbE			
LAN	Fixed LAN Port	2 x GbE		1 x GbE		3 x GbE		3 x GbE			
	LAN Subnet	1		2		4		4			
	DMZ Port										
USB Port						2		2			
WLAN	Standard			11b/g/n		11a/b/g/n/ ac wave 2		11a/b/g/n/ ac wave 2		11a/b/g/n/ ac wave 2/ax	
	2.4GHz			•		•		•		•	
	5GHz					•		•		•	
	Mesh					•		•		•	
VPN	Max. VPN			2		2		2			
	Max. SSL VPN			2		2		2			
	VPN Matcher			•		•		•			
Routing	Static Route	•		•		•		•			
	Policy Route			•		•		•			
	RIP	•		•		•		•			
	BGP			•							
	OSPF										
Content Filter	APP, Web Category, DNS Keyword			•		•		•			
	URL Keyword	•		•		•		•			
NAT Sessions		10K		30K		50K		50K			
Bandwidth Management				•		•		•			
DrayDDNS						•		•			
VoIP										•	
VPN Management											
AP Management				2		2		2			
Switch Management											

## xDSL Router

		Vigor2766 series				Vigor2865 series		Vigor2865 series			Vigor2866 series				
		2766	2766ac	2766ax	2766Vac	2865	2865ac	2865ax	2865Vac	2865Lac	2866	2866ac	2866ax	2866Vac	2866Lac
WAN	Fixed WAN Port	1 x AVDSL/35b/G.Fast				1 x AVDSL/35b		1 x AVDSL/35b		1 x AVDSL/35b + 1 x LTE	1 x AVDSL/35b/G.Fast				1 x AVDSL/35b/G.Fast + 1 x LTE
	WAN/LAN Switchable Port	1 x GbE				1 x GbE		1 x GbE			1 x GbE				
LAN	Fixed LAN Port	3 x GbE				5 x GbE		5 x GbE			5 x GbE				
	LAN Subnet	4				8		8			8				
	DMZ Port					1		1			1				
USB Port		2				2		2		1	2				1
WLAN	Standard		11a/b/g/n/ac wave 2	11a/b/g/n/ac wave 2/ax	11a/b/g/n/ac wave 2		11a/b/g/n/ac wave 2	11a/b/g/n/ac wave 2/ax	11a/b/g/n/ac wave 2			11a/b/g/n/ac wave 2	11a/b/g/n/ac wave 2/ax	11a/b/g/n/ac wave 2	
	2.4GHz			•			•		•				•		
	5GHz			•			•		•				•		
	Mesh			•			•		•				•		
VPN	Max. VPN	2				32		32			32				
	Max. SSL VPN	2				16		16			16				
	VPN Matcher	•				•		•			•				
Routing	Static Route	•				•		•			•				
	Policy Route	•				•		•			•				
	RIP	•				•		•			•				
	BGP	•				•		•			•				
	OSPF														
Content Filter	APP, Web Category, DNS Keyword	•				•		•			•				
	URL Keyword	•				•		•			•				
NAT Sessions		50K				60K		60K			60K				
Bandwidth Management		•				•		•			•				
DrayDDNS		•				•		•			•				
VoIP						•			•				•		
VPN Management						8		8			8				
AP Management		2				20		20			20				
Switch Management						10		10			10				

## Access Point

		VigorAP 903	VigorAP 906	VigorAP 912C	VigorAP 960C	VigorAP 1062C	VigorAP 918R series	
		903	906	912C	960C	1062C	918R	918RPD
Band	2.4GHz	•	•	•	•	•	•	•
	5GHz	•	•	•	•	•	•	•
Max. Link Rate (Mbps)		400 + 867	574+2400	300 + 867	600+1200	1200+4800	400 + 867	400 + 867
Max. Clients (per band)		128 (64)	256 (128)	256 (128)	256 (128)	256 (128)	256 (128)	256 (128)
Environment		Indoor	Indoor	Indoor	Indoor	Indoor	Outdoor	Outdoor
LAN Switch		5 x GbE	5 x GbE	1 x GbE	1 x GbE	1 x 2.5GbE	1 x GbE	2 x GbE
USB Port		1						
Power Input		DC / PoE	DC / PoE	DC / PoE	DC / PoE	DC / PoE	PoE	PoE
PoE Out								•
Antenna		2 x 2 External	2 x 2 External	2 x 2 Internal	2 x 2 Internal	4 x 4 Internal	2 x 2 External	2 x 2 External + Internal
Mounting (Desk/Wall/Ceiling/Pole)		D/W	D/W	C/W	C/W	C/W	W/P	W/P
Wi-Fi Standard		11a/b/g/n/ ac wave 2	11a/b/g/n/ ac wave 2/ax	11a/b/g/n/ ac wave 2	11a/b/g/n/ ac wave 2/ax	11a/b/g/n/ ac wave 2/ax	11a/b/g/n/ ac wave 2	11a/b/g/n/ ac wave 2
AP-Assisted Roaming		•	•	•	•	•	•	•
AirTime Fairness		•	•	•	•	•	•	•
Band Steering		•	•	•	•	•	•	•
Max. Number of SSID (per band)		8 (4)	8 (4)	8 (4)	8 (4)	16 (8)	8 (4)	8 (4)
802.1q tag-based VLAN		•	•	•	•	•	•	•
Built-in RADIUS Server		•	•	•	•	•	•	•
Stand-alone Operation		•	•	•	•	•	•	•
Mesh		Root, Node	Root, Node	Root, Node	Root, Node	Root, Node	Root, Node	Root, Node
VigorRouter Mgmt. (APM)		•	•	•	•	•	•	•



## Switch

		Smart Lite	Web Smart			L2+ Managed										
		G1080	G1282	P1282	G2100	P2100	FX2120	Q2121x	PQ2121x	PQ2121xb	Q2200x	PQ2200xb	G2282x	P2282x	G2540xs	P2540xs
Ports	RJ-45	8 x GbE	24 x GbE	24 x GbE	8 x GbE	8 x GbE		8 x 2.5GbE	8 x 2.5GbE	8 x 2.5GbE	16 x 2.5GbE	16 x 2.5GbE	24 x GbE	24 x GbE	48 x GbE	48 x GbE
	SFP				2	2	12 (SFP+)	4 (SFP+)	4 (SFP+)	4 (SFP+)	4 (SFP+)	4 (SFP+)	4 (SFP+)	4 (SFP+)	6 (SFP+)	6 (SFP+)
	SFP/GbE Combo		4	4												
	Console				•	•	•	•	•	•	•	•	•	•	•	•
PoE	Ports			24 PoE+		8 PoE+			8 PoE+	4 PoE++ & 4 PoE+		4 PoE++ & 12 PoE+		24 PoE+		48 PoE+
	Power Budget			400		140			140	240		400		400		400
LAN	Spanning Tree		STP, RSTP	STP, RSTP	STP, RSTP, MSTP	STP, RSTP, MSTP	STP, RSTP, MSTP	STP, RSTP, MSTP	STP, RSTP, MSTP	STP, RSTP, MSTP	STP, RSTP, MSTP	STP, RSTP, MSTP	STP, RSTP, MSTP	STP, RSTP, MSTP	STP, RSTP, MSTP	STP, RSTP, MSTP
	LACP (Max. Group Number / Max. Number in each group)	1 / 2	8 / 8	8 / 8	4 / 8	4 / 8	8 / 8	8 / 8	8 / 8	8 / 8	8 / 8	8 / 8	8 / 8	8 / 8	8 / 8	8 / 8
	ONVIF Surveillance		•	•	•	•	•	•	•	•	•	•	•	•	•	•
VLAN	Tag-Based	•	•	•	•	•	•	•	•	•	•	•	•	•	•	•
	MAC-Based		•	•	•	•	•	•	•	•	•	•	•	•	•	•
	Voice & Surveillance VLAN		•	•	•	•	•	•	•	•	•	•	•	•	•	•
	GVRP				•	•	•	•	•	•	•	•	•	•	•	•
	QinQ (Basic)				•	•	•	•	•	•	•	•	•	•	•	•
Layer3 Features	Static Route				•	•	•	•	•	•	•	•	•	•	•	•
	VLAN Route				•	•	•	•	•	•	•	•	•	•	•	•
	DHCP Server				•	•	•	•	•	•	•	•	•	•	•	•
Security	IP Conflict Detection & Prevention		•	•	•	•	•	•	•	•	•	•	•	•	•	•
	IPSG		•	•	•	•	•	•	•	•	•	•	•	•	•	•
	ACL		•	•	•	•	•	•	•	•	•	•	•	•	•	•
	802.1X/ MAC Authentication				•	•	•	•	•	•	•	•	•	•	•	•
	DAI				•	•	•	•	•	•	•	•	•	•	•	•
	DHCP Snooping				•	•	•	•	•	•	•	•	•	•	•	•
Multicast	IGMP Snooping	v2	v2, v3(BISS)	v2, v3(BISS)	v2, v3(BISS)	v2, v3(BISS)	v2, v3(BISS)	v2, v3(BISS)	v2, v3(BISS)	v2, v3(BISS)	v2, v3(BISS)	v2, v3(BISS)	v2, v3(BISS)	v2, v3(BISS)	v2, v3(BISS)	v2, v3(BISS)
	MLD Snooping				v1, v2	v1, v2	v1, v2	v1, v2	v1, v2	v1, v2	v1, v2	v1, v2	v1, v2	v1, v2	v1, v2	v1, v2
Management	sFlow						•	•	•	•	•	•	•	•	•	•
	SNMP		v1/v2c/v3	v1/v2c/v3	v1/v2c/v3	v1/v2c/v3	v1/v2c/v3	v1/v2c/v3	v1/v2c/v3	v1/v2c/v3	v1/v2c/v3	v1/v2c/v3	v1/v2c/v3	v1/v2c/v3	v1/v2c/v3	v1/v2c/v3
	LLDP		•	•	•	•	•	•	•	•	•	•	•	•	•	•
	SWM	•	•	•	•	•	•	•	•	•	•	•	•	•	•	•

***DrayTek***

[www.draytek.com](http://www.draytek.com)

Tel: +886-3-5972727 Fax: +886-3-5972121 E-mail: [info@draytek.com](mailto:info@draytek.com)

Trademarks and brand names are the properties of their respective owners.

The scope of delivery and other details are subject to change without prior notice.

Copyrights © DrayTek Corp. All right reserved.