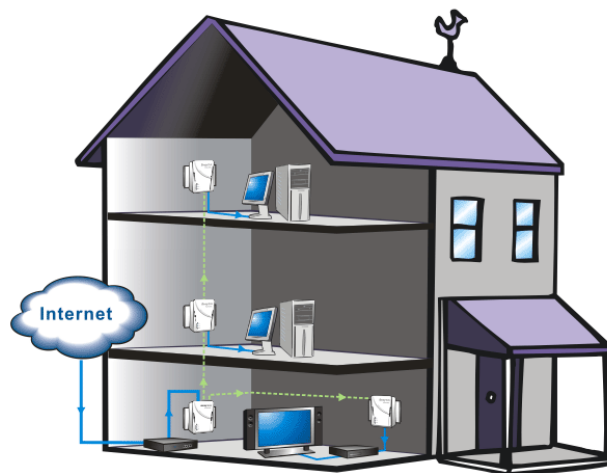


VigorPlug 200_{AV} 200M Powerline Ethernet Adapter

Quick Start Guide V1.0

Introduction

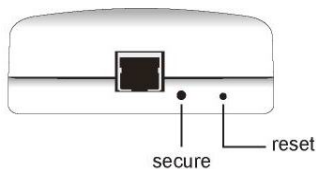
VigorPlug 200_{AV} can be used to bridge any Ethernet device to your powerline networking with 200Mbps high speed. It is not necessary for you to spend time and money installing expensive Ethernet cable to share your Internet connection or HD/ SD video stream at home. Now, with VigorPlug 200_{AV}, no wiring comes true. Just plug **VigorPlug 200_{AV}** to the power outlet on the **wall!** You can get stable and fast speed for data transmission at any site in your house.



Package Content

- Powerline Ethernet Adapter
- Quick Start Guide (this paper)
- CD ROM (includes User's Guide and Utility)
- Ethernet cable

Panel Description



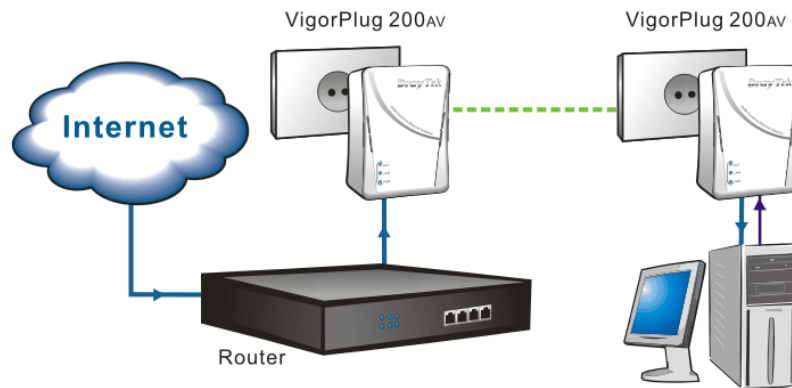
LED	Description
ACT (Green light and Red light)	<p>ON: Means the plug is idle. Green light means high rate (throughput > 20Mbps); red and green lights mean medium rate (20Mbps > throughput > 10Mbps) red light means low rate (throughput < 10Mbps).</p> <p>OFF: No activity.</p> <p>Blinks: Means powerline networking activity</p>
LAN (Red light)	<p>ON: Means Ethernet is connected.</p> <p>Blinks: Means the data is transmitting through the plug.</p>
PWR (Green light)	<p>ON: Means the plug is idle.</p>

Connector	Description
Ethernet	Where you will connect 10/100M Ethernet network devices, such as PCs, printer servers, and anything else you want to put on your networks.
Secure	Please make sure press this button > 10 sec till all LEDs re-flash for each device to generate a random network password first. When each device gets the new random network password, please press one device's secure button < 3 sec first and then press another device secure button < 3 sec. Both devices will auto group. It will be easy to secure your home powerline network. All the operations must be completed within 2 minutes, otherwise time out will be occurred.
Reset	Reset the device to factory default. Please remove the Ethernet cable from RJ-45 connector before you press the

	button. Please press the button < 3 sec, the device will reset automatically.
--	--

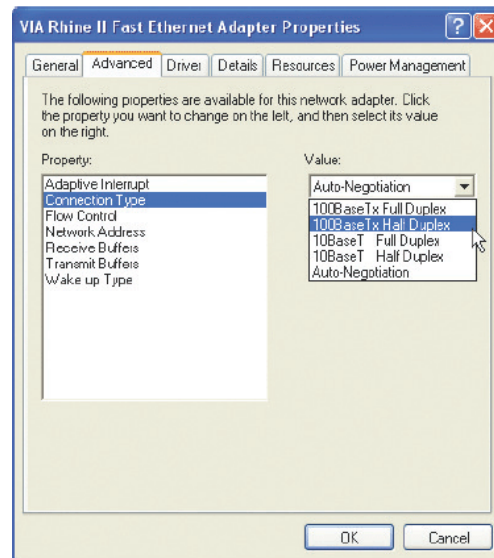
Installation

1. Simply plug into a power outlet and do not use a power strip or UPS with the wall mount device.

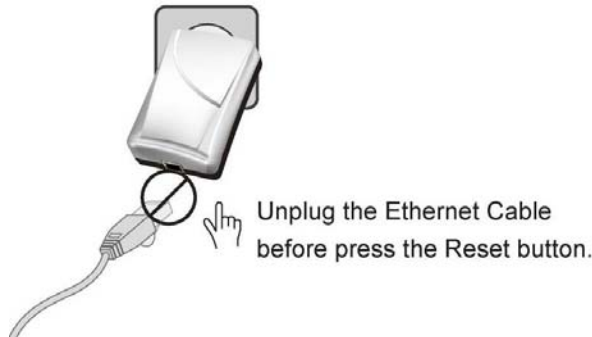


2. Use a twisted-pair cable with RJ-45 plugs at both ends, and plug into Ethernet device and Ethernet of VigorPlug 200 AV.
3. Before install VigorPlug 200 AV Utility, please make sure your windows system already installed the Microsoft .NET Framework 1.1 or later version.

Note 1: In some cases, it would be better for the user to set 100MBaseTx half duplex for NB/PC NIC's connection type while connecting to such device. It can ensure the best performance and keep the stability.



Note 2: Be sure unplug the Ethernet cable before press the Reset button to avoid damage to your device.



Warning

This is a class A product. In a domestic environment this product may cause radio interference in which case the user may be required to take adequate measures.

Important Safety Instructions

- The following pre-cautions should be taken when using this product:
- This product is intended for connection to the AC power line.
- The following pre-cautions should be taken when using this product:
- Please read all instructions before installing and operating this product.
- Please follow all warnings and instructions marked on the product.
- Do not operate this product near water.
- This product should never be place near or over radiator, or heat register.
- This product relies on a building's electrical installation for short-circuit (over current) protection.
- Ensure that a fuse or circuit breaker is used on the phase conductors (all current-carrying conductors).
- Do not allow anything to reset on the product interconnect cords.
- Do not locate this product where people may walk on the cords.
- The power cord should be plugged directly into a specification AC wall outlet.
- Only a qualified technician should service this product. Opening or removing covers may result in exposure to dangerous voltage points or other risk.
- Unplug this product from the wall outlet and refer the product to qualified service personal for the following conditions:
 - ◆ When the interconnect cords are damaged or frayed.
 - ◆ If liquid has been spilled onto the product.
 - ◆ If the product has been exposed to rain or water.
 - ◆ If the product does not operate normally when the operating instructions have followed.
 - ◆ If the product exhibits a distinct change in performance.