

Local Network Management Software for DrayTek Devices

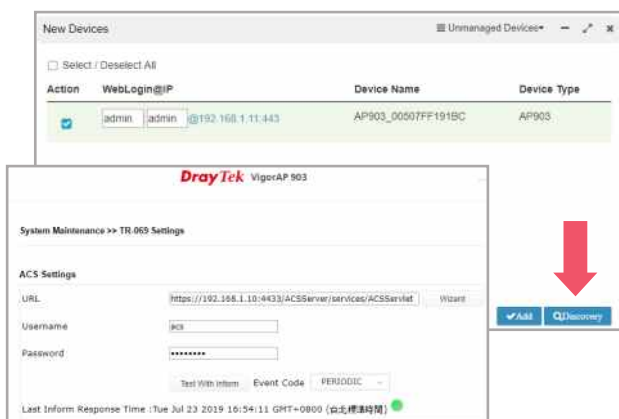


- 🔍 Automatically discover all VigorAPs/VigorSwitches on your LAN and manage up to 100 devices.
- 🔄 Setup the wireless in minutes by pushing configuration a selected APs or all the AP on the network; setup the VLAN or PoE for selected Switches
- ⚠️ Get notified when an AP/Switch lost connection with the VigorConnect Server
- 📊 Network insights about AP/Switch, client, and CPU usage, etc. over a specified period
- 🛠️ Schedule an off-hour firmware upgrade or configure backup/restore

VigorConnect is the Local network management software which based on the TR-069 protocol. To manage and monitor the AP/Switch's status, we need to add the AP/Switch into VigorConnect first. VigorConnect support auto-discovery feature that you don't need to configure the TR-069 setting manually.

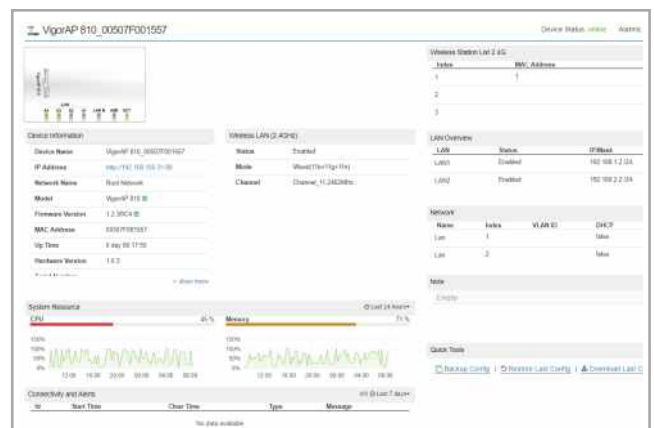
Discovery

VigorConnect discovers VigorAPs/VigorSwitchs in your LAN, and provisions TR-069 settings



AP Dashboard

Check AP online/offline status, SSIDs, channels, and clients, etc.



Floor Plan

Upload floor map for AP deployment planning.



Logs

Show logs of CPE actions.



Monitoring

CPU Usage, Memory Usage, client number history



Rogue AP Detection

List unknown APs around your network.

The screenshot shows the 'Monitoring -Rogue AP' interface. It displays a table with columns for No., MAC, Name, Model, Vendor, Location, and Time. The table lists several detected rogue APs with their respective details.

Alarm

Get notification when APs/Switches lose connection with VigorConnect Server.

The screenshot shows the 'Monitoring -Alarm' interface. It displays a table with columns for No., Act Status, Time, Device Name, MAC Address, Alarm Level, and Alarm Message. The table contains several entries for device loss connection alarms.

Switch VLAN Settings

Configure the Interface settings with Graphic View.



System Requirement

Server

Operating System: Windows 7 or later version
 CPU: 1.2GHz Quad Core 64 bits
 Memory: 2 GB RAM, Storage: 1 GB

Client

Browser: Firefox, Chrome, Opera, Safari, IE, Edge