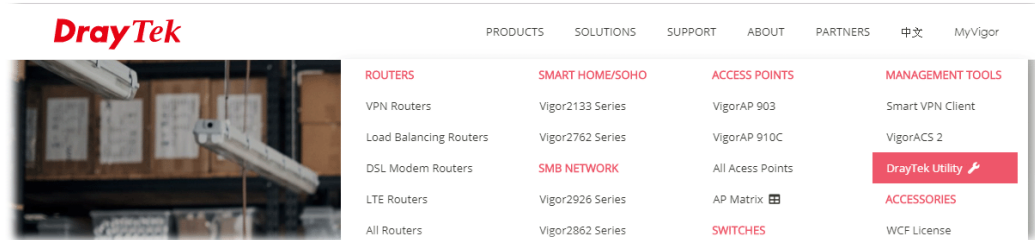


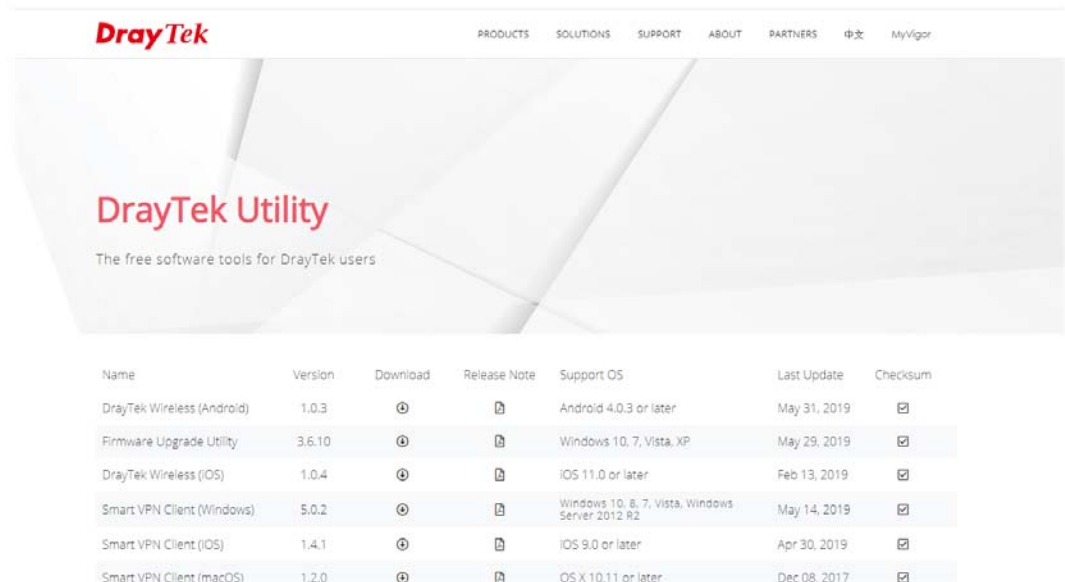
Installation

Follow the steps below.

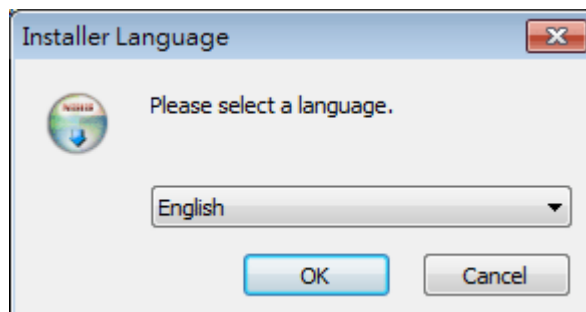
1. Visit www.draytek.com.
2. Open **Products>>Management Tools>>DrayTek Utility**.



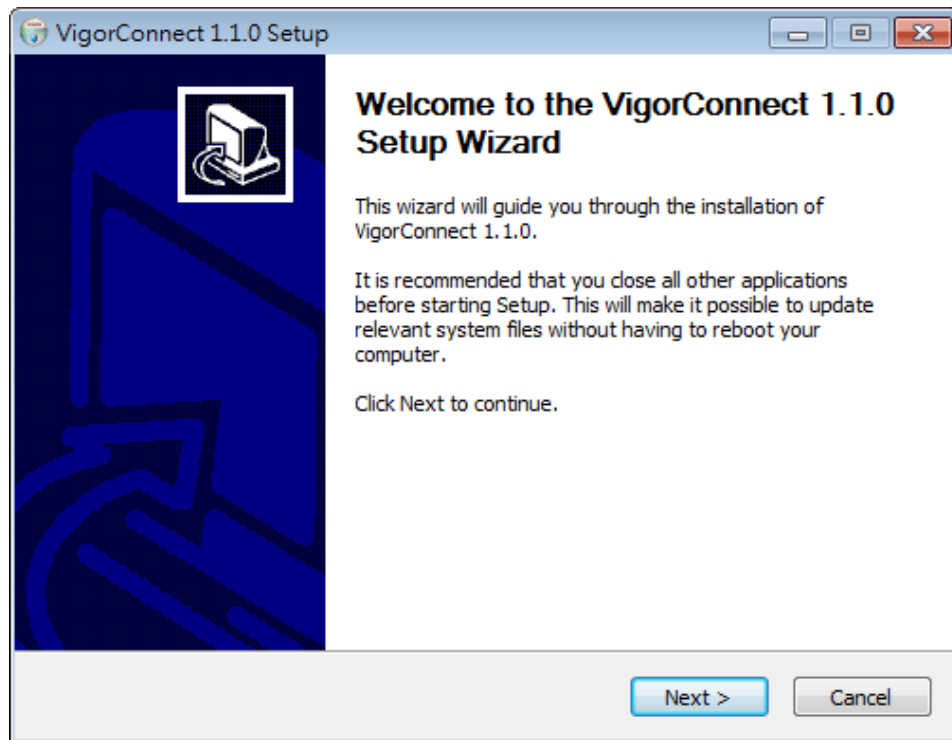
3. Locate **VigorConnect**.



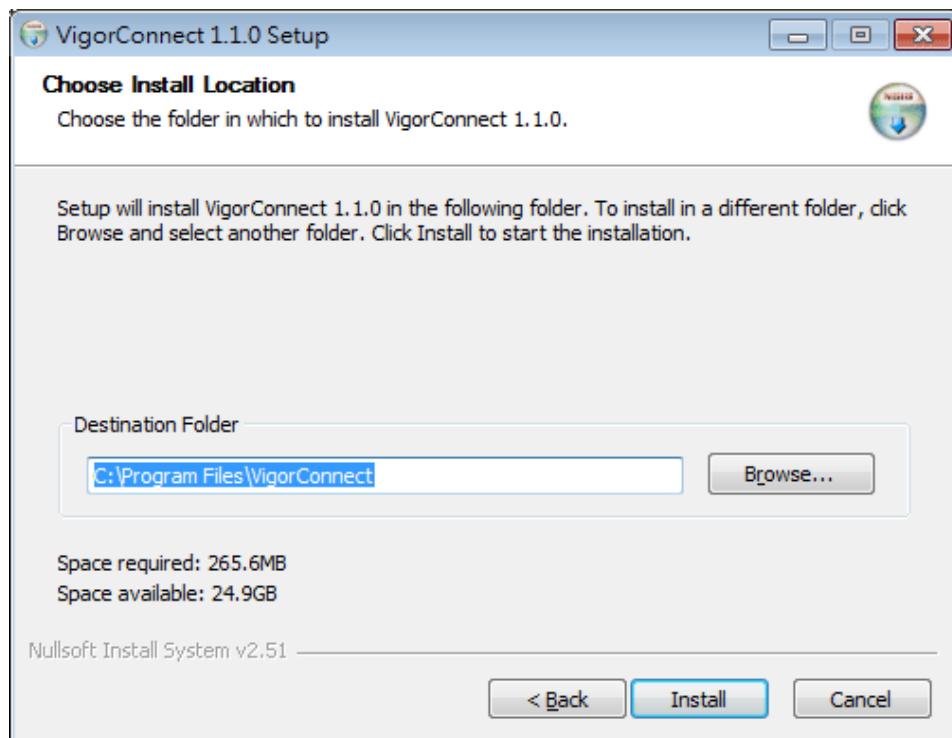
4. Download **VigorConnect** onto your computer.
5. Run the installer. Specify the language you want.



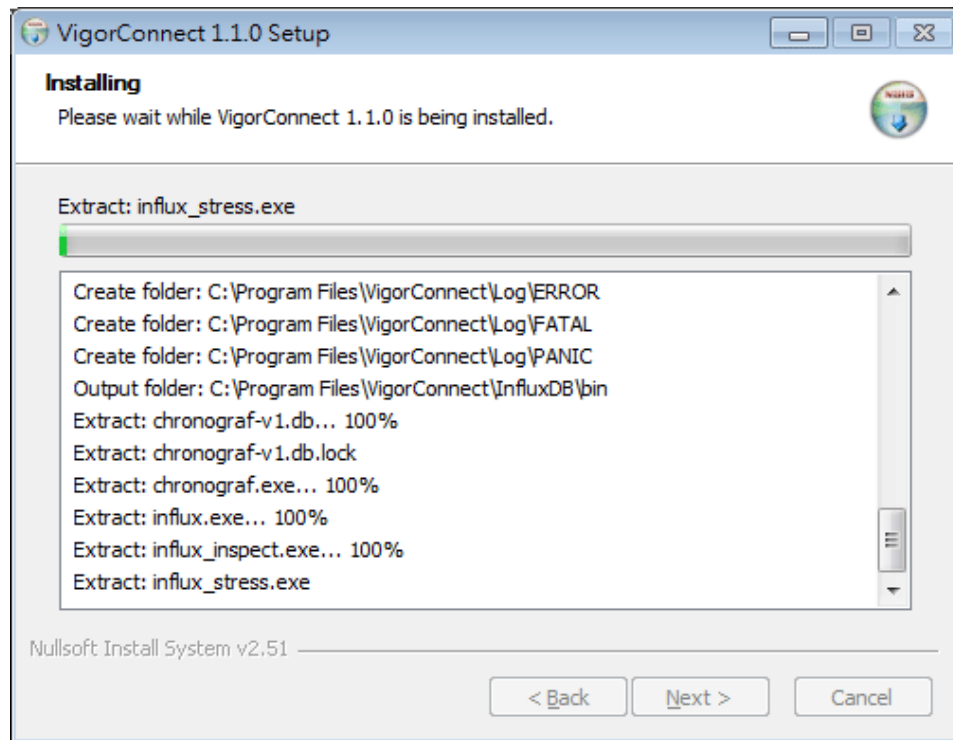
6. When the following dialog appears, click **Next**.



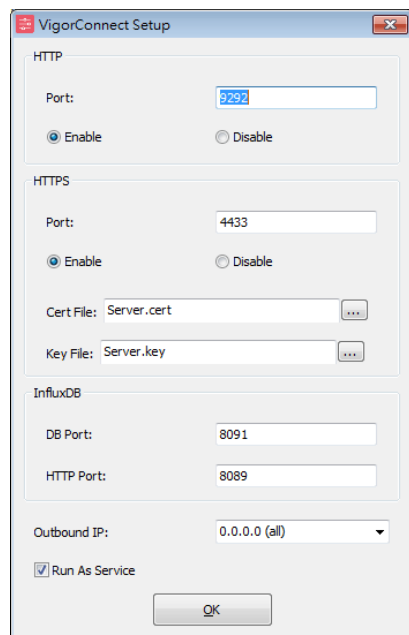
7. Specify the destination folder and click **Install**.



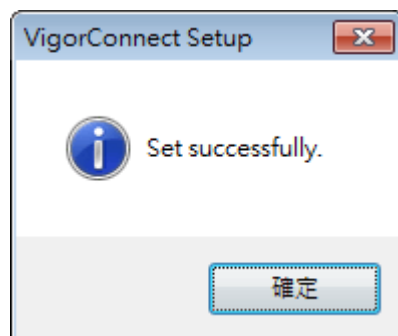
8. Wait for required files installing onto your computer.



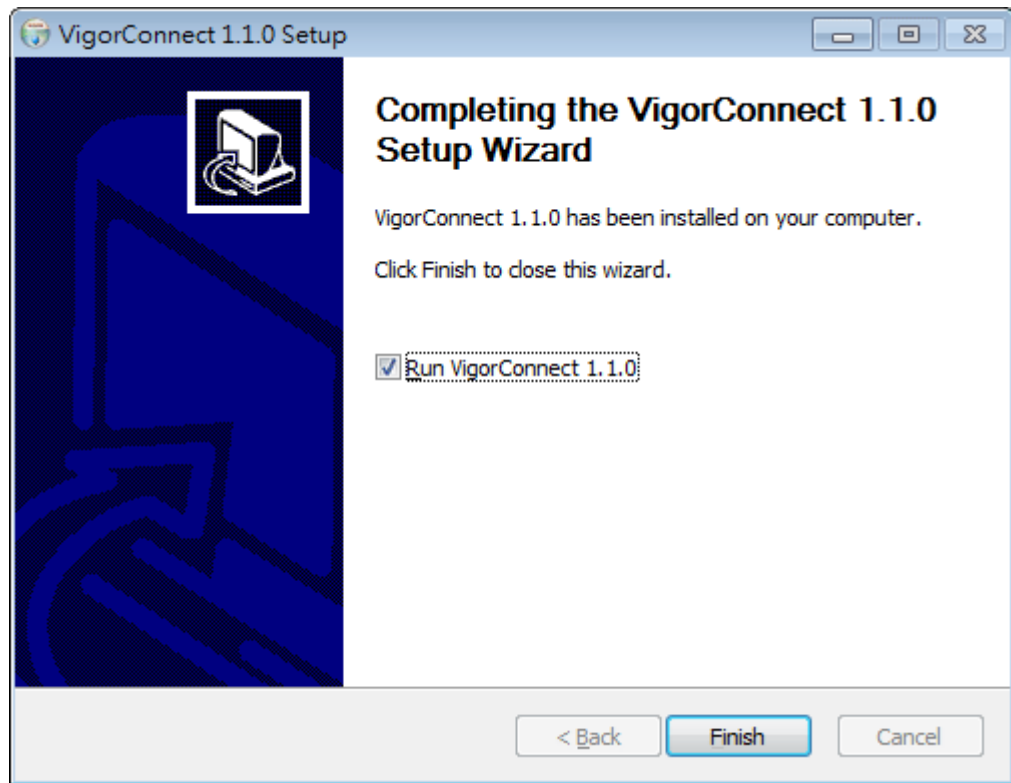
9. Then, the setup dialog with default values will appear. Click **OK**.



10. When the following dialog appears, simply click **OK**.



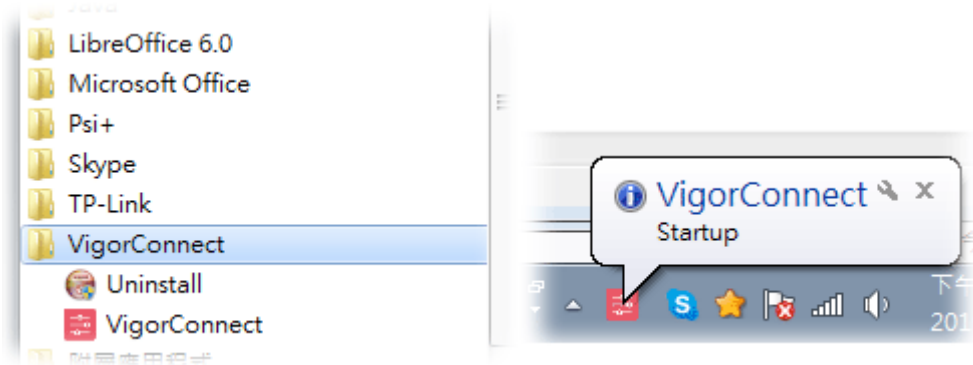
11. Check the box of Run VigorConnect and click **Finish**.



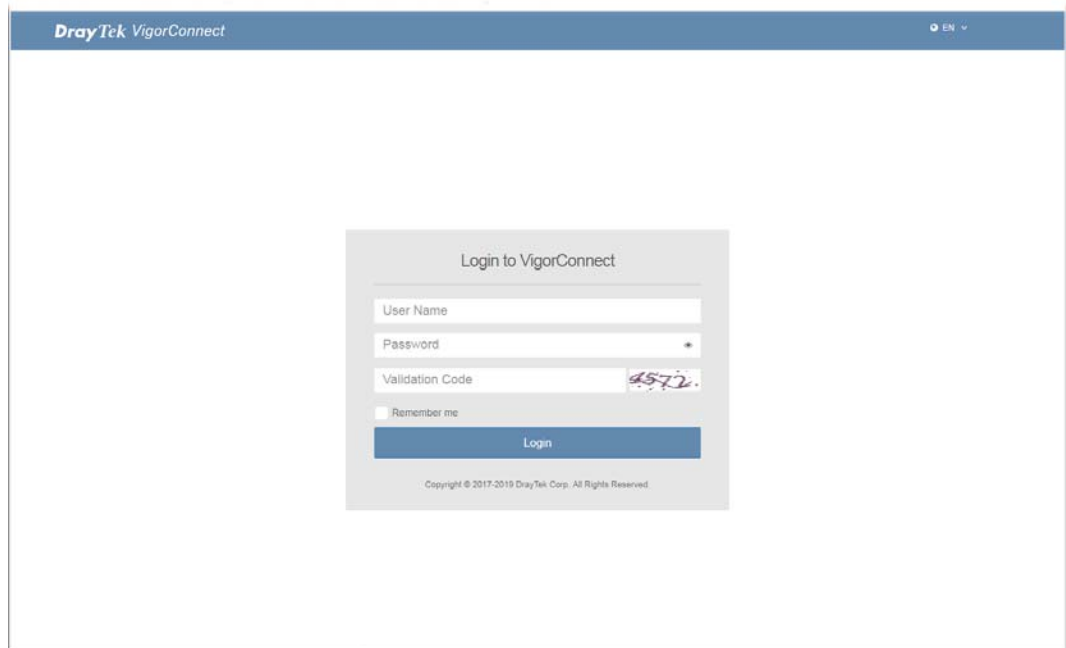
Accessing to Web User Interface

All functions and settings of this access point must be configured via web user interface. Please start your web browser (e.g., Firefox).

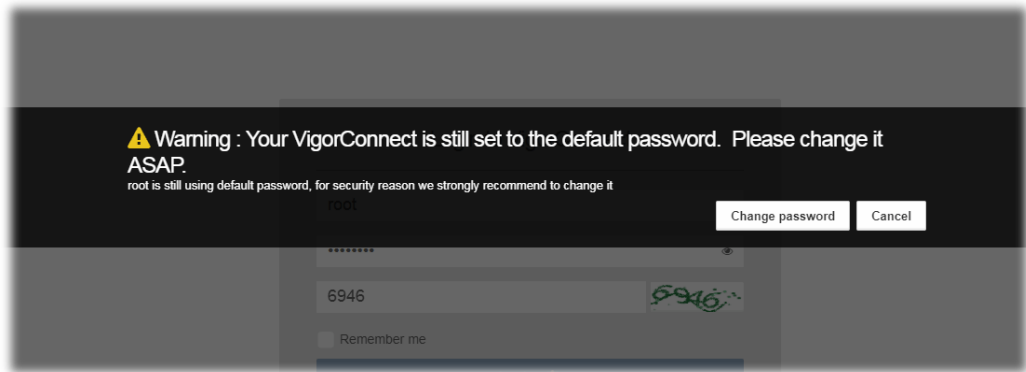
1. Double click the **VigorConnect** icon on the desktop or open **Programs >> VigorConnect>> VigorConnect**.



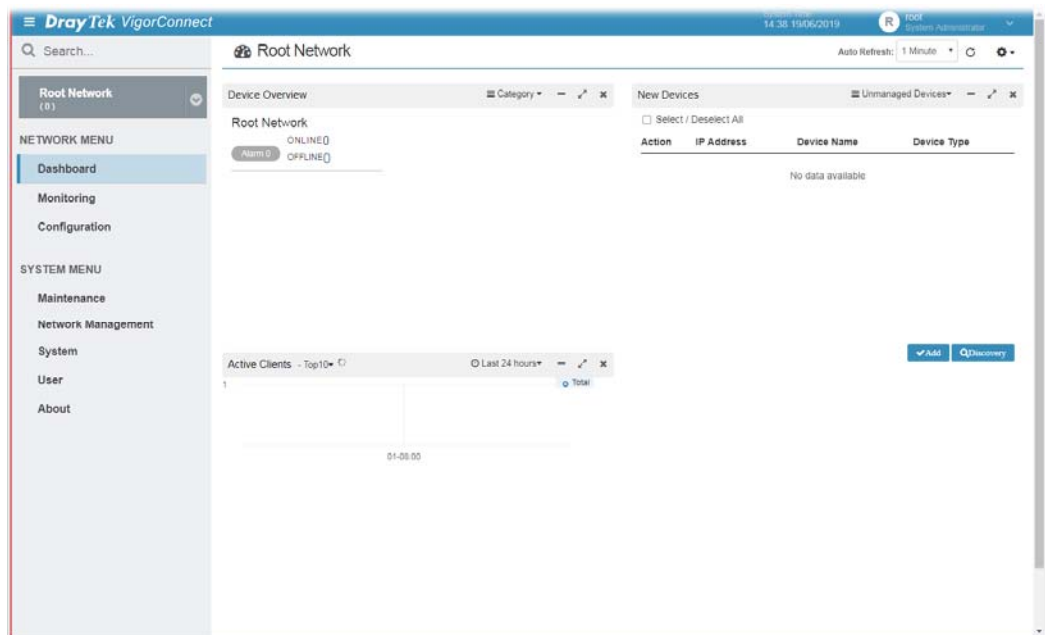
2. Please enter "root/admin123" as the Username/Password and enter validation code. Then, click **Login**.



3. For the first time to access into VigorConnect, Vigor system will ask you to change the login password. If you want to use the default password, simply click **Cancel** to access into the main screen.



4. Now, the **Main Screen** will appear.



5. The web page can be logged out by clicking **Log Out** on the top right of the web page. Or, logout the web user interface according to the chosen condition. The default setting is **Auto Logout**, which means the web configuration system will logout after 5 minutes without any operation. Change the setting of auto logout if you want.

i Note:

If you fail to access the web configuration, please go to the section “Trouble Shooting” for detecting and solving your problem.

For using the device properly, it is necessary for you to change the password of web configuration for security and adjust primary basic settings.